



ETG Inc.

8599 Venice BLVD, Suite K, Los Angeles CA 90034, U. S. A.

Phone: + 1 (310) 202-6400

Fax: +1 (310) 202-6406

<http://www.etgtech.com/>

E-Mail: info@etgtech.com

ETG-3228UC630-19T

DATA SHEET

QC:

ENG:

Prepared By:



ETG Inc.

8599 Venice BLVD, Suite K, Los Angeles CA 90034, U. S. A.

Phone: + 1 (310) 202-6400

Fax: +1 (310) 202-6406

<http://www.etgtech.com/>

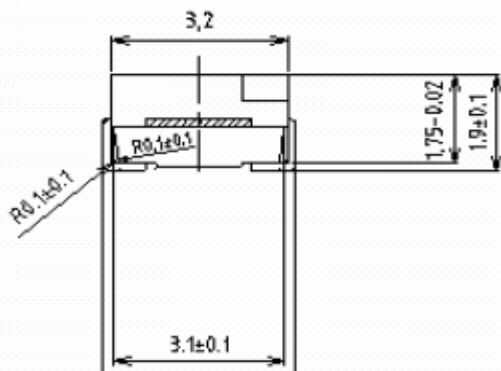
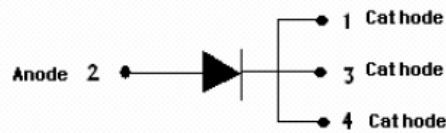
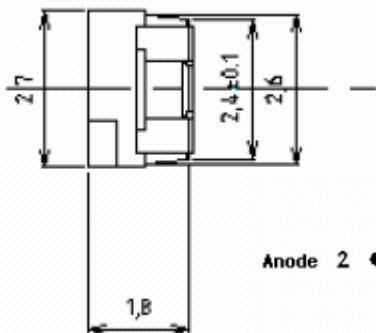
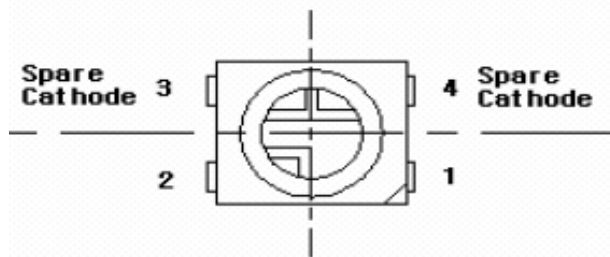
EMail: info@etgtech.com

REFLECTOR COATING TYPE HIGH-PERFORMANCE LEDs

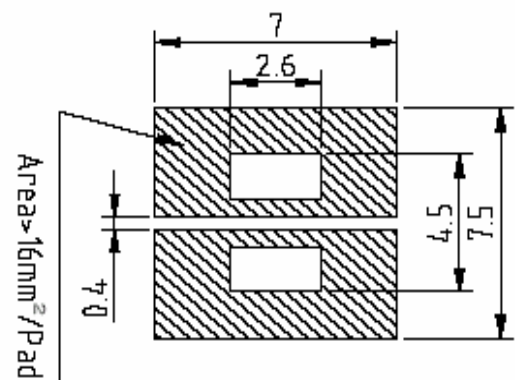
High Performance SMD Single-Color Top LEDs

Part Number: ETG-3228UC630-19T

Package outlines



RECOMMEND PAD LAYOUT



ITEM	MATERIALS
Resin	Epoxy
Bonding wire	Ø 25 µm Au
Lens color	clear
Dice	AllnGaP
Emitted color	RED

NOTES:

1. All dimensions are in millimeters (inches);
2. Tolerances are ±0.2mm (0.008inch) unless otherwise noted.

Rev :	Date	Drawn by :	Checked by :	Approved by :
B	2006/02/20	許媚鳳	譚文質	黃靜文



ETG Inc.

8599 Venice BLVD, Suite K, Los Angeles CA 90034, U. S. A.

Phone: + 1 (310) 202-6400

Fax: +1 (310) 202-6406

<http://www.etgtech.com/>

EMail: info@etgtech.com

REFLECTOR COATING TYPE HIGH-PERFORMANCE LEDs

Part Number: ETG-3228UC630-19T

Absolute maximum ratings

(T_A=25)

Parameter	Symbol	Value	Unit
Forward current	I _f	30	mA
Reverse voltage	V _r	5	V
Power dissipation	P _d	90	mW
Operating temperature range	T _{op}	-20 ~+80	
Storage temperature range	T _{stg}	-40 ~+100	
Peak pulsing current (1/8 duty f=1kHz)	I _{fp}	125	mA

Electro-optical characteristics

(T_A=25)

Parameter	Test Condition	Symbol	Value			Unit
			Min	Typ	Max	
Wavelength at peak emission	I _f =30mA	λ _{peak}		624		nm
Spectral half bandwidth	I _f =30mA	λ		20		nm
Dominant wavelength	I _f =30mA	λ _{dom}		630		nm
Forward voltage	I _f =20mA	V _f	--	1.9	2.4	V
Luminous intensity	I _f =20mA	I _v	150	--	440	mcd
Viewing angle at 50% I _v	I _f =10mA	2θ _{1/2}	--	120	--	Deg
Reverse current	V _r =5V	I _r	--	--	10	μA



ETG Inc.

8599 Venice BLVD, Suite K, Los Angeles CA 90034, U. S. A.

Phone: + 1 (310) 202-6400

Fax: +1 (310) 202-6406

<http://www.etgtech.com/>

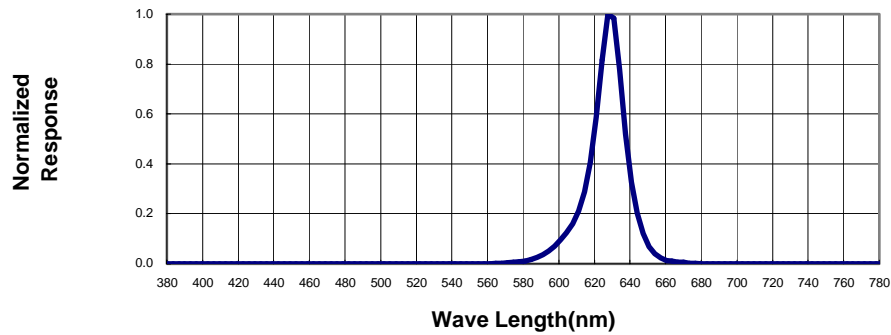
E-Mail: info@etgtech.com

REFLECTOR COATING TYPE HIGH-PERFORMANCE LEDs

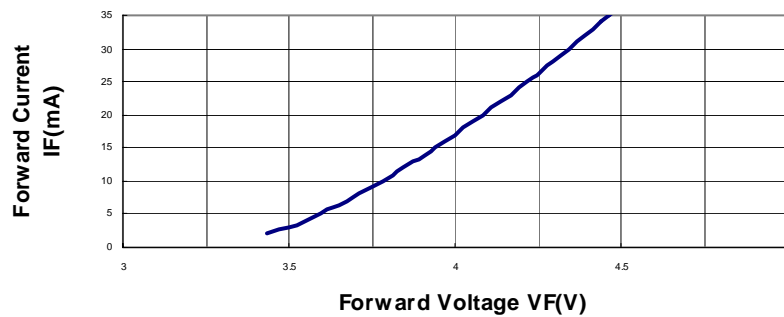
Part Number: ETG-3228UC630-19T

OPTICAL CHARACTERISTIC CURVES

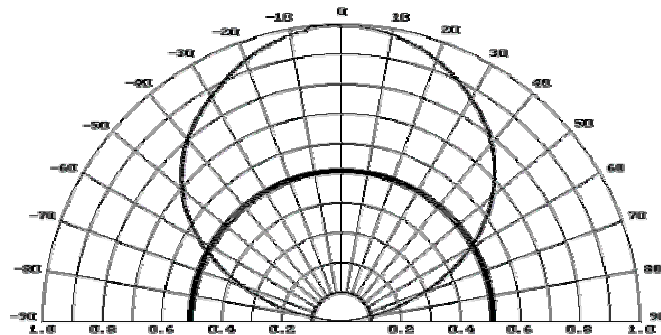
Spectral Radiance (Peak @ 630nm)



Forward Current vs Forward Voltage



Directive Characteristics





ETG Inc.

8599 Venice BLVD, Suite K, Los Angeles CA 90034, U. S. A.

Phone: + 1 (310) 202-6400

Fax: +1 (310) 202-6406

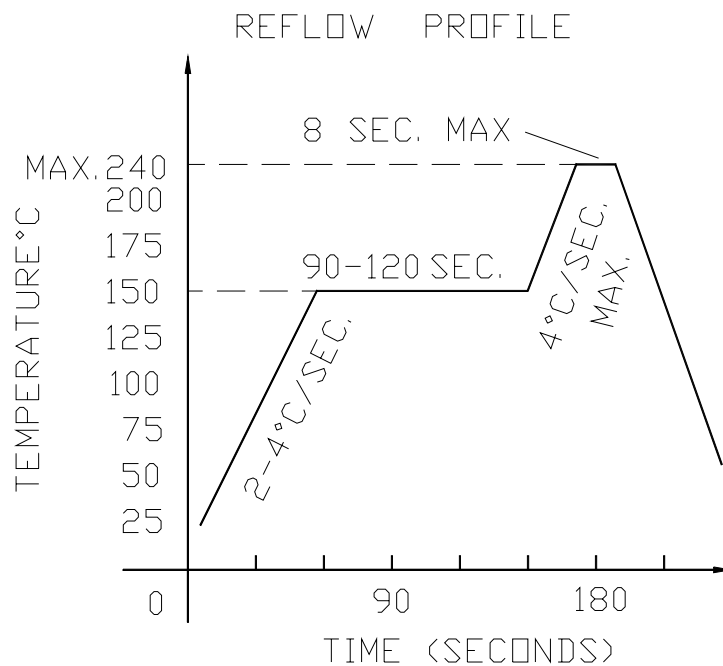
<http://www.etgtech.com/>

Email: info@etgtech.com

REFLECTOR COATING TYPE HIGH-PERFORMANCE LEDs

Reflow Profile

■ Reflow Temp/Time



■ Soldering iron

Basic spec is ≤ 5 sec when 260 . If temperature is higher,

time should be shorter (+10 \rightarrow -1sec).Power dissipation

of iron should be smaller than 15W, and temperatures should

be controllable .Surface temperature of the device should be under 230 .



ETG Inc.

8599 Venice BLVD, Suite K, Los Angeles CA 90034, U. S. A.

Phone: + 1 (310) 202-6400

Fax: +1 (310) 202-6406

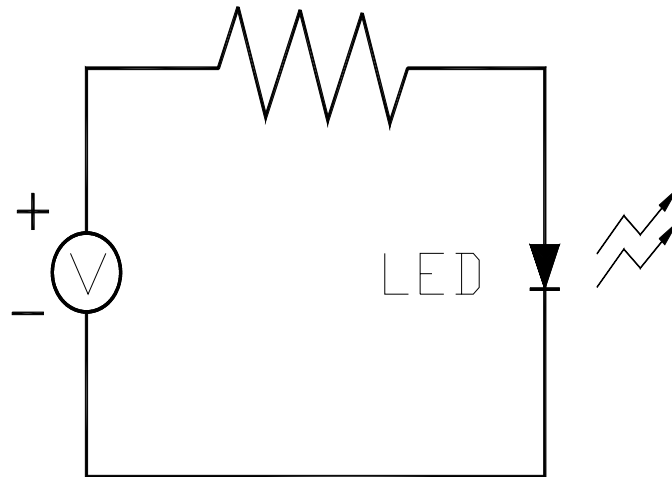
<http://www.etgtech.com/>

E-Mail: info@etgtech.com

REFLECTOR COATING TYPE HIGH-PERFORMANCE LEDs

Test circuit and handling precautions

■ Test circuit



■ Handling precautions

1. Over-current-proof

Customer must apply resistors for protection; otherwise slight voltage shift will cause big current change (Burn out will happen).

2.Storage

2.1 It is recommended to store the products in the following conditions:

Humidity: 60% R.H. Max.

Temperature : 5 ~30 (41 ~86)

2.2 Shelf life in sealed bag: 12 month at < 5 ~30 and < 30% R.H. after the package is opened, the products should be used within a week or they should be keeping to stored at 20 R.H. with zip-lock sealed.

3.Baking

It is recommended to baking before soldering when the pack is unsealed after 72hrs. The Conditions are as followings:

3.1 60±3 x(12~24hrs) and < 5%RH, taped reel type

3.2 100±3 x(45min~1hr), bulk type

3.3 130±3 x(15~30min), bulk type

