



ETG Inc.

8599 Venice BLVD, Suite K, Los Angeles CA 90034, U. S. A.

Phone: + 1 (310) 202-6400

Fax: +1 (310) 202-6406

<http://www.etgtech.com/>

E-Mail: info@etgtech.com

ETG-3227UC630-19T

DATA SHEET

QC:

ENG:

Prepared By:



ETG Inc.

8599 Venice BLVD, Suite K, Los Angeles CA 90034, U. S. A.

Phone: + 1 (310) 202-6400

Fax: +1 (310) 202-6406

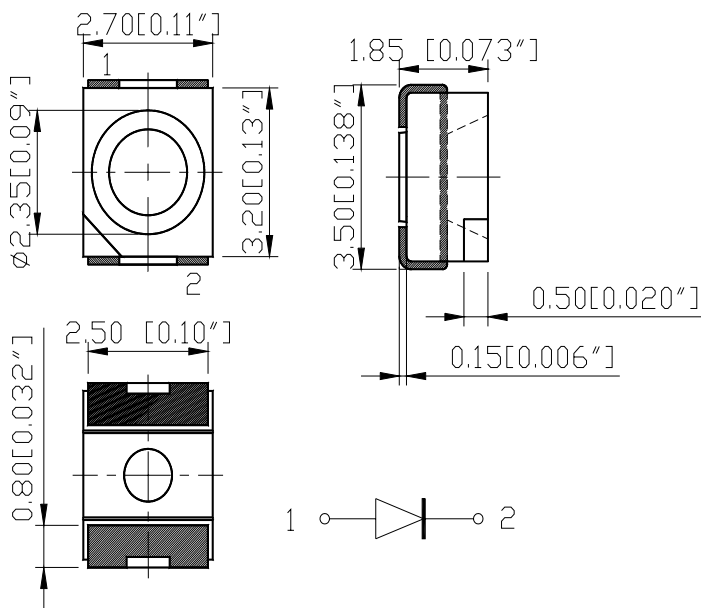
<http://www.etgtech.com/>

EMail: info@etgtech.com

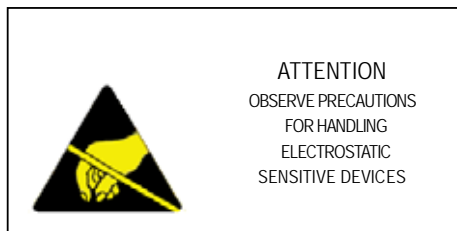
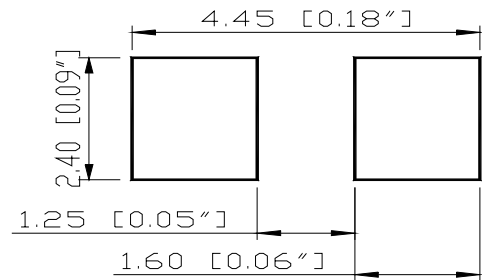
Top LED Lamps

Part Number: ETG-3227UC630-19T

Package outlines



RECOMMEND PAD LAYOUT



ITEM	MATERIALS	
Resin (mold)	Epoxy	
Bonding Wire	Ø 25 µm Au	
Lens color	Water clear	
Printed circuit board	BT (White)	
Dice	RED	AllnGaP

NOTES:

1. All dimensions are in millimeters (inches);
2. Tolerances are ±0.1mm (0.004inch) unless otherwise noted.

Rev :	Date	Drawn by :	Checked by :	Approved by :
A	2005-10-14	許媚鳳	譚文質	黃靜文

**ETG Inc.**

8599 Venice BLVD, Suite K, Los Angeles CA 90034, U. S. A.

Phone: + 1 (310) 202-6400

Fax: +1 (310) 202-6406

<http://www.etgtech.com/>EMail: info@etgtech.com**Top LED Lamps****Part Number: ETG-3227UC630-19T****Absolute maximum ratings****(T_A=25)**

Parameter	Symbol	Value	Unit
Power dissipation	Pd	75	mW
Forward current	If	30	mA
Reverse voltage	Vr	5	V
Operating temperature range	Top	-20 ~+80	
Storage temperature range	Tstg	-20 ~+80	
Peak pulsing current (1/8 duty f=1kHz)	Ifp	125	mA

Electro-optical characteristics**(T_A=25)**

Parameter	Test Condition	Symbol	Value			Unit
			Min	Typ	Max	
Wavelength at peak emission	If=50mA	λ_{peak}		640		nm
Spectral half bandwidth	If=50mA	λ		20		nm
Dominant wavelength	If=50mA	λ_{dom}	625	630	635	nm
Forward voltage	If=50mA	Vf		2.0	2.5	V
Luminous intensity * 1	If=50mA	Iv	120	190		mcd
Viewing angle at 50% Iv	If=10mA	2 θ 1/2	--	120	--	Deg
Reverse current	Vr=5V	Ir	--	--	10	μ A

* 1 Note: Luminous intensity tolerances are $\pm 10\%$.



ETG Inc.

8599 Venice BLVD, Suite K, Los Angeles CA 90034, U. S. A.

Phone: + 1 (310) 202-6400

Fax: +1 (310) 202-6406

<http://www.etgtech.com/>

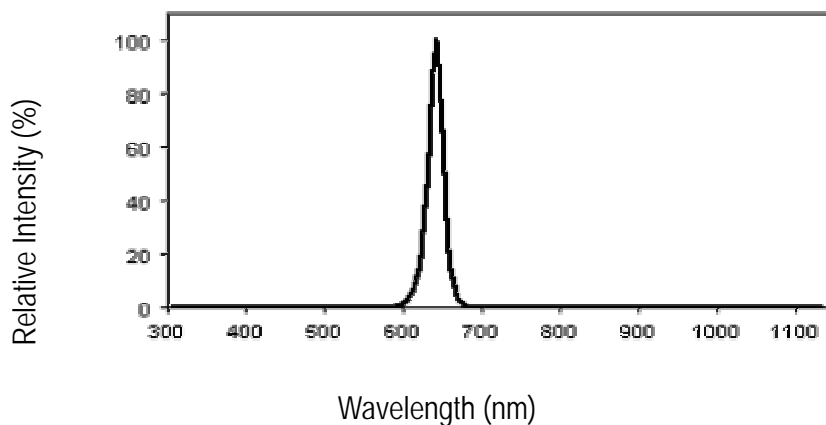
E-Mail: sales@etgtech.com

Top LED Lamps

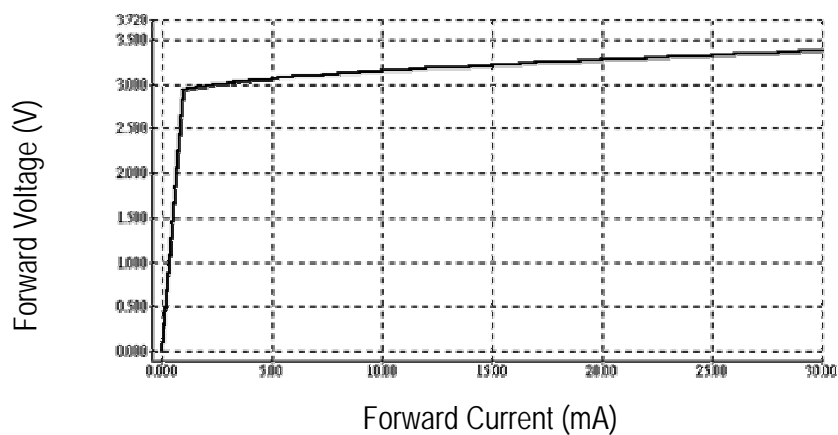
Part Number: ETG-3227UC630-19T

OPTICAL CHARACTERISTIC CURVES

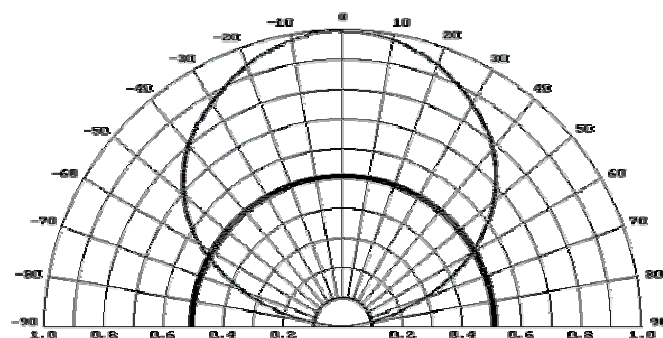
Relative Intensity vs. Wavelength



Forward Current vs. Forward Voltage



Directive Characteristics





ETG Inc.

8599 Venice BLVD, Suite K, Los Angeles CA 90034, U. S. A.

Phone: + 1 (310) 202-6400

Fax: +1 (310) 202-6406

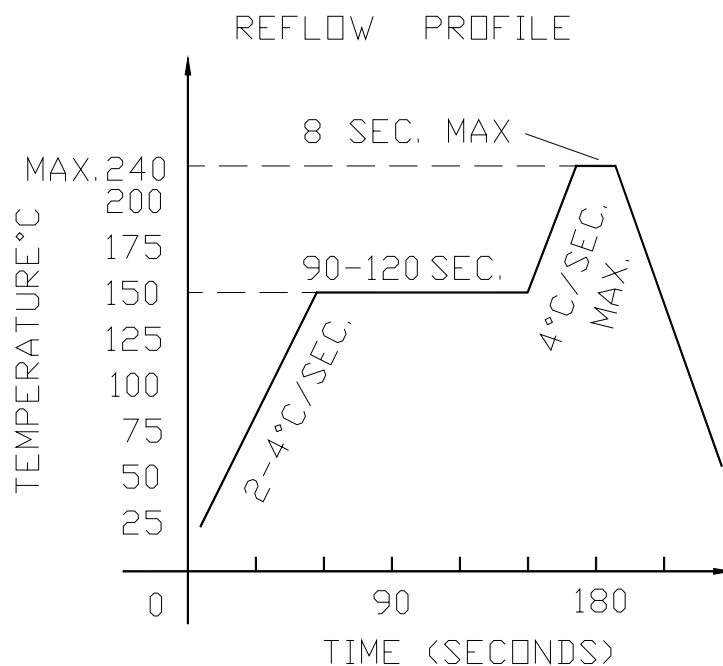
<http://www.etgtech.com/>

E-Mail: sales@etgtech.com

Top LED Lamps

Reflow Profile

■ Reflow Temp/Time



■ Soldering iron

Basic spec is ≤ 5 sec when 260 . If temperature is higher,

time should be shorter (+10 \rightarrow -1sec). Power dissipation

of iron should be smaller than 15W, and temperatures should

be controllable . Surface temperature of the device should be under 230 .



ETG Inc.

8599 Venice BLVD, Suite K, Los Angeles CA 90034, U. S. A.

Phone: + 1 (310) 202-6400

Fax: +1 (310) 202-6406

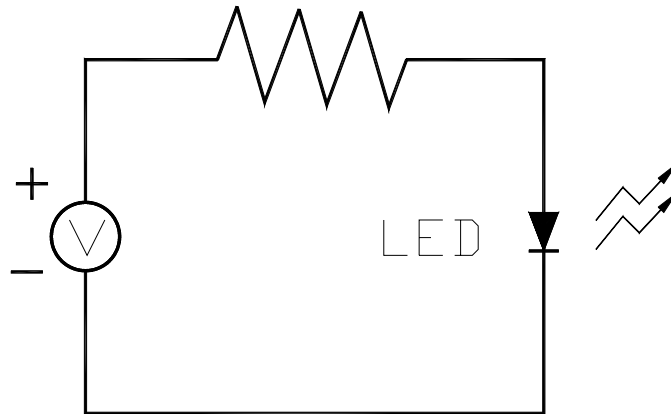
<http://www.etgtech.com/>

EMail: sales@etgtech.com

Top LED Lamps

Test circuit and handling precautions

■ Test circuit



■ Handling precautions

1. Over-current-proof

Customer must apply resistors for protection; otherwise slight voltage shift will cause big current change (Burn out will happen).

2.Storage

2.1 It is recommended to store the products in the following conditions:

Humidity: 60% R.H. Max.

Temperature : 5 ~30 (41 ~86)

2.2 Shelf life in sealed bag: 12 month at < 5 ~30 and < 30% R.H. after the package is

Opened, the products should be used within a week or they should be keeping to stored at

20 R.H. with zip-lock sealed.

3.Baking

It is recommended to baking before soldering when the pack is unsealed after 72hrs. The Conditions are as followings:

3.1 60±3 x(12~24hrs) and < 5%RH, taped reel type

3.2 100±3 x(45min~1hr), bulk type

3.3 130±3 x(15~30min), bulk type



ETG Inc.

8599 Venice BLVD, Suite K, Los Angeles CA 90034, U. S. A.

Phone: + 1 (310) 202-6400

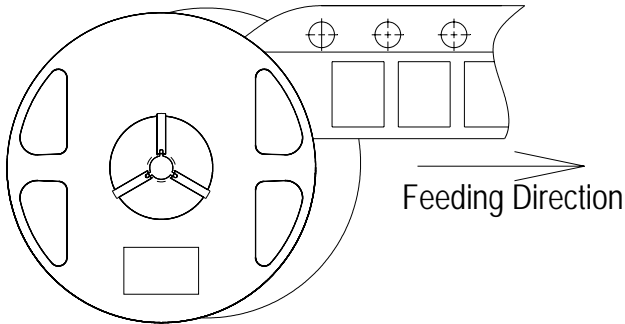
Fax: +1 (310) 202-6406

<http://www.etgtech.com/>

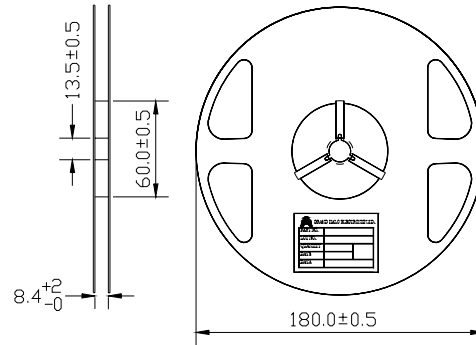
EMail: sales@etgtech.com

Top LEDs Packaging Specifications

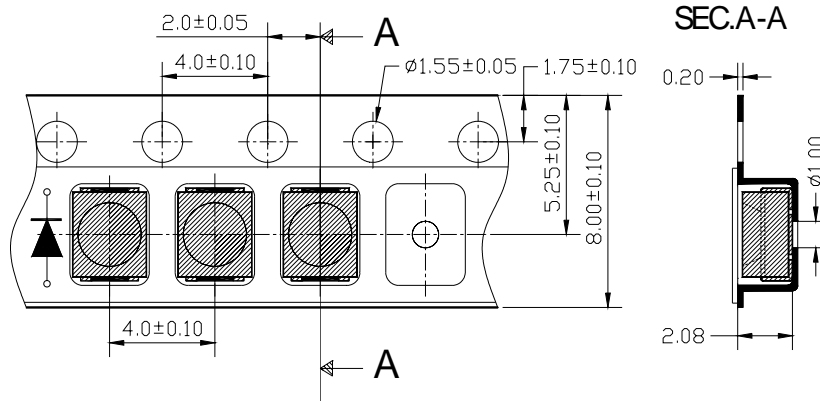
● Feeding Direction



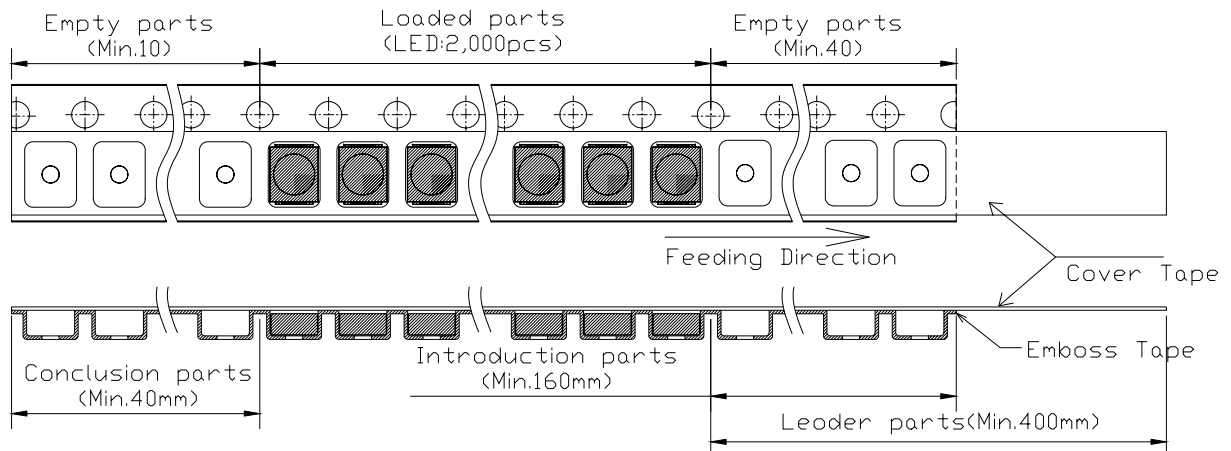
● Dimensions of Reel (Unit: mm)



● Dimensions of Tape (Unit: mm)



● Arrangement of Tape



NOTES

1. Empty component pockets are sealed with top cover tape;
2. The maximum number of missing lamps is two;
3. The cathode is oriented towards the tape sprocket hole in accordance with ANSI/EIA RS-481 specifications;